

## Joint Transportation Board – 21 September 2020

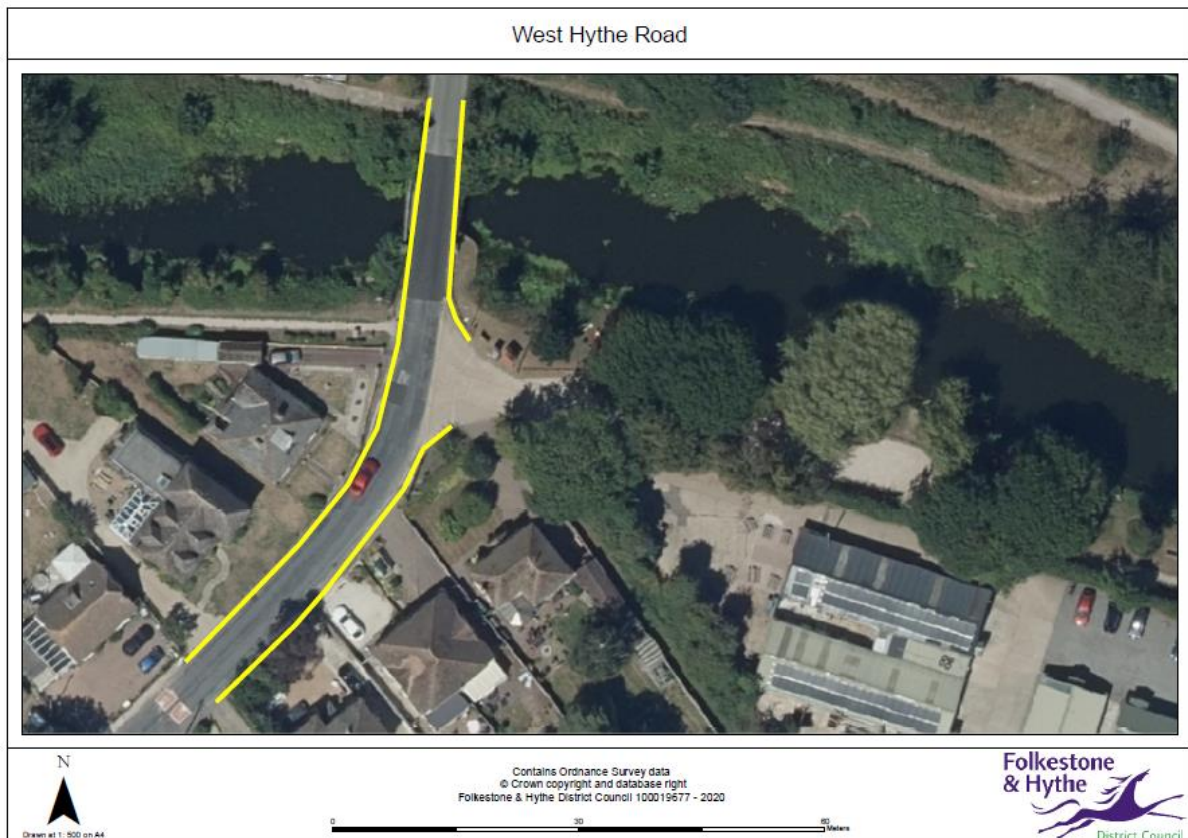
### JTB/20/01 Proposed Parking Restrictions

#### Supplementary information

The information below is provided as part of report JTB/20/01.

#### West Hythe Road

A section of double yellow lines on both sides in both directions to help combat parking on the corner of the industrial units. (A footway/verge ban is already in place where the verge starts but vehicles are parking before this)



This page is intentionally left blank